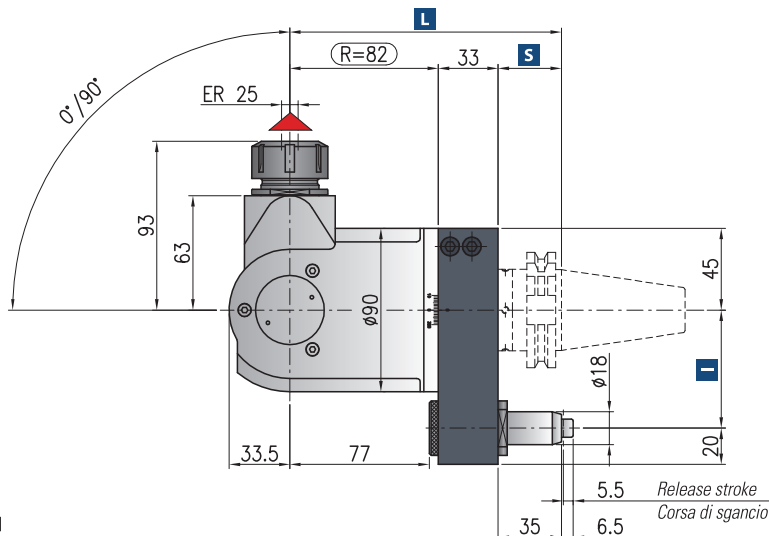
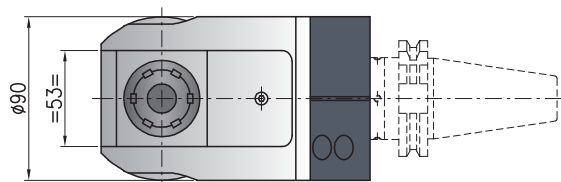
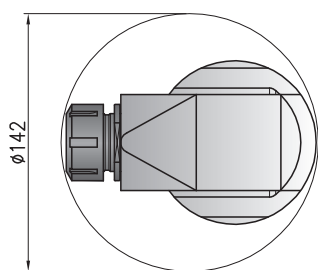


# TCUcn-2,5

# ACTCU25C

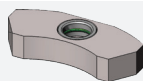


Minimum diameter without tool  
Diametro minimo senza utensile



Retaining block / Tassello di ritegno / Stop-Block

**NOT INCLUDED - NON INCLUSO**



Ratio  
Rapporto  
**1:1**



RPM  
Velocità  
**4.000 min<sup>-1</sup>**



Max. axial load  
Max. carico assiale  
**480 N**



Torque  
Momento torcente  
**18 Nm**

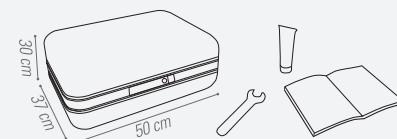


Weight  
Peso  
**7 kg**



Collet  
Pinza  
**ER-25 (Ø 1/16 mm)**

**\* STANDARD EQUIPMENT INCLUDES:**



Direction of rotation opposite to machine spindle / senso di rotazione contrario al mandrino

Shank/Cono	DIN-69871		CAT		MAS-BT		HSK		CAPTO		KM
Size/Grandezza/Größe	40	50	40	50	63-80	100	C5-C6	C8	50-63		
<b>I</b>	65-80 - (110*)	80-(110*)	65-80-(110*)	80-(110*)	65-80-(110*)	80-(110*)	65-80-(110*)	80-(110*)	65-80-(110*)	80-(110*)	65-80-(110*)
<b>S</b>	35	35	35	41	42	45	38	40	40	40	40
<b>L</b>	150	150	150	156	157	160	153	155	155	155	155

Dual contact spindles available/Disponibilità coni a doppio contatto

\*optional

Non interchangeable input drive shank/ Coni di attacco non intercambiabili

**Opzione / Option**



bar max  
**12**

Coolant through pin  
Adduzione refrigerante attraverso il perno



min<sup>-1</sup>  
**6.000**

High speed optional RPM max.  
Opzione alta velocità RPM max.



Ø mm max.  
**16**

Welding output  
Welding